

# Manual Retractable Tonneau Cover Installation Guide

## Available models

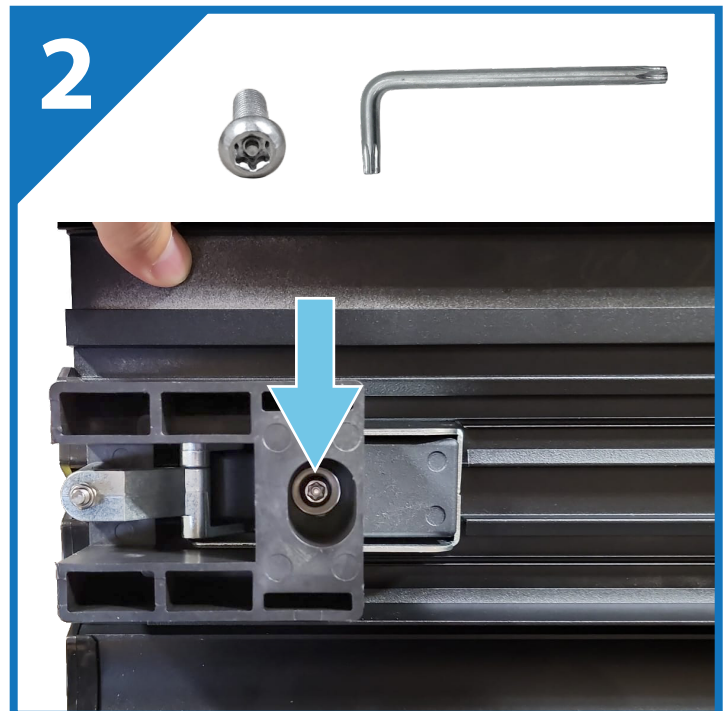
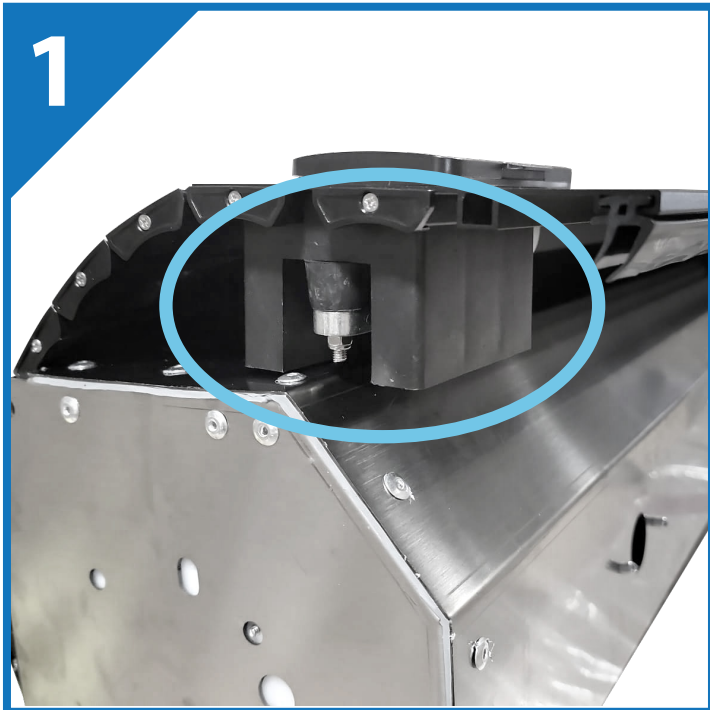
Colorado	F150	Ram	Ranger
Silverado	Titan	Tundra	Canyon



# Remove Lock Protector Guideline

## ATTENTION

The locks are protected by an extra layer of plastic block, to avoid any damage, it is removable after loosening that one screw. **Please remember to put the screw back in afterwards.**





# Components

Main cover x1	A	clamp x6	C1	screw x4
Rails x2	A2	wrench x1	C2	washer(L) x4
Cover panel x1	A3	rubber cap x6	C3	washer(S) x4
Foam tape x2	A4	bolt plate x2	C4	wrench x1
Tube x4	E	lubricating oil	C5	plastic washer x4
Tube connector x4	B1	T-slot screws x6	D1	screw x4
Distance Bar x1	B3	washer(L) x6	D2	T-slot nut x4
5in screw x6 (Silverado only)	B4	washer(S) x6	D3	wrench x1
	B5	10mm hex nut x6	D4	screw cap x4
			D5	cap washer x4



Key for lock x2  
(Keys are inside the plastic wrap on the strap hanging from the front of cover. 2 keys for 2 locks, shareable)



**CAUTION:** Over torquing hardware may damage components.



See full installation video here.

## Parts Diagram

FIG 1

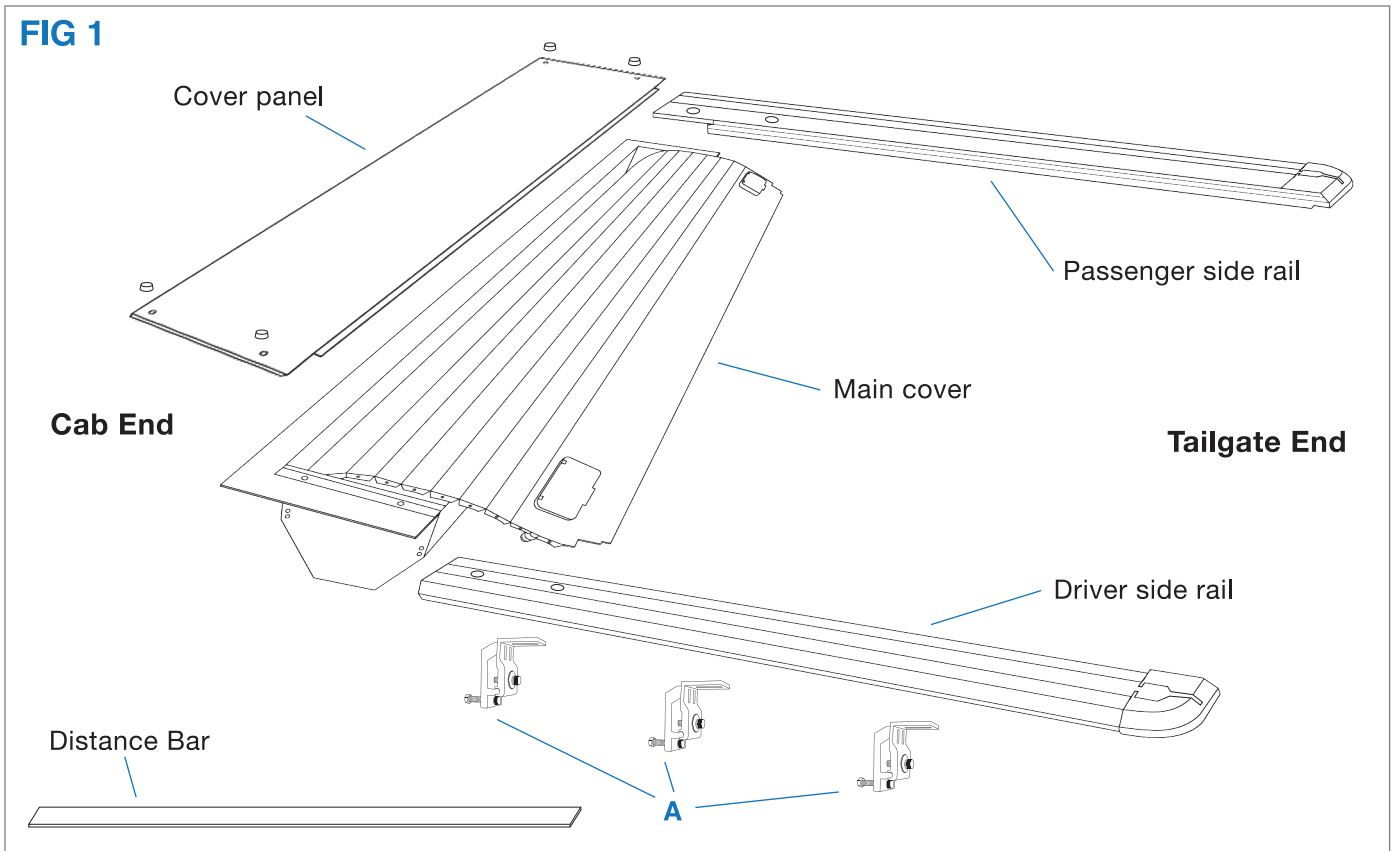
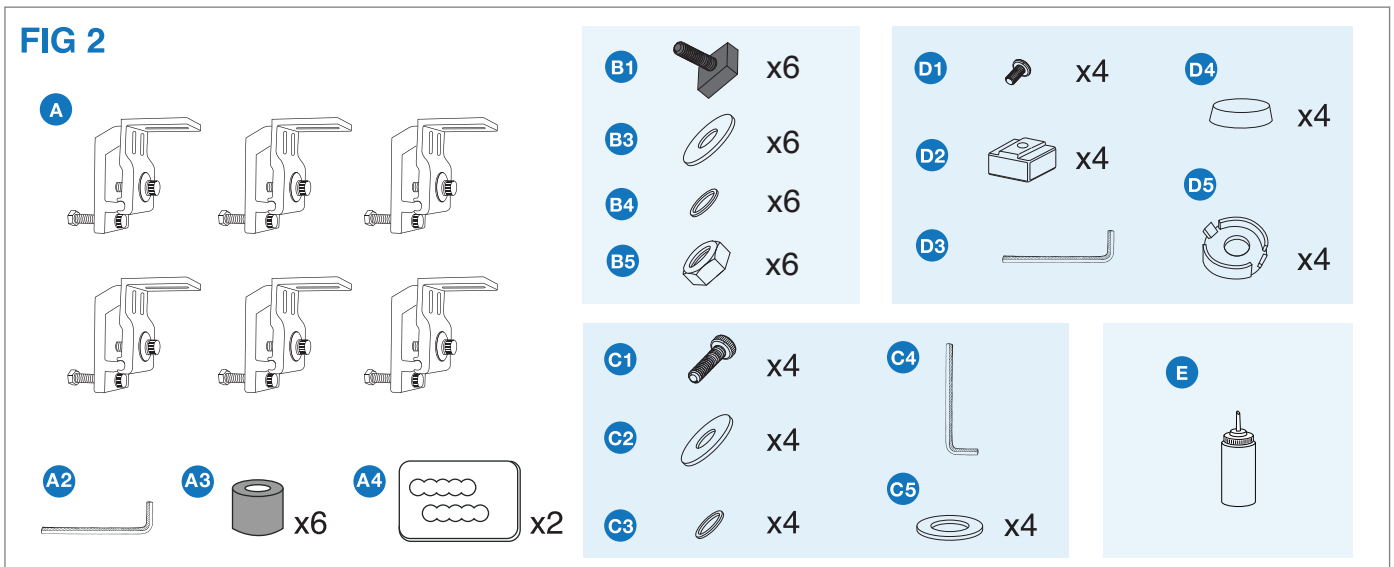
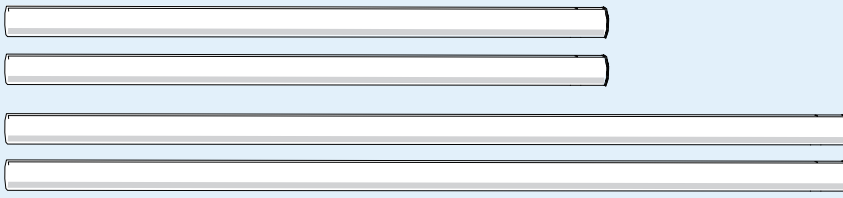


FIG 2

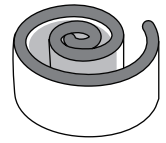
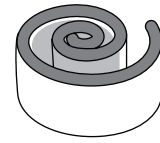
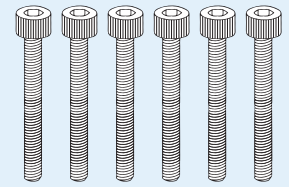


**FIG 3**

Drain tubes

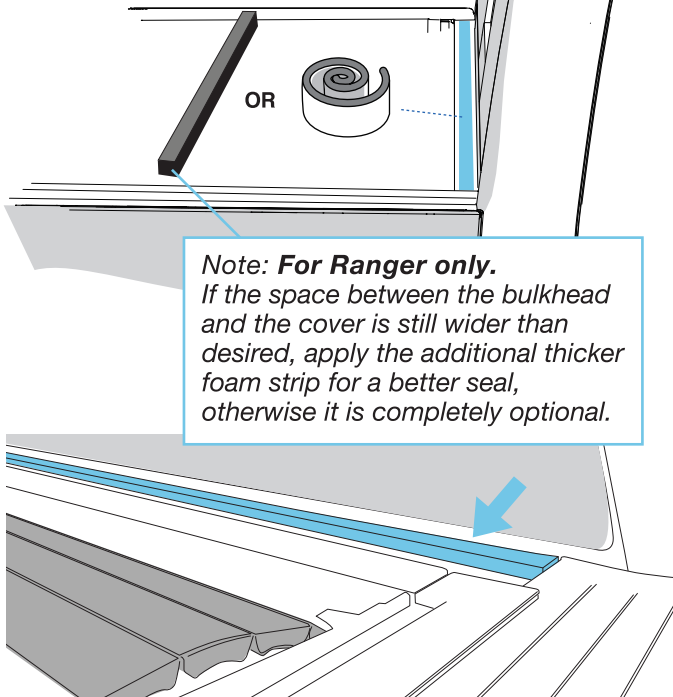


5in screws \*SILVERADO ONLY\*



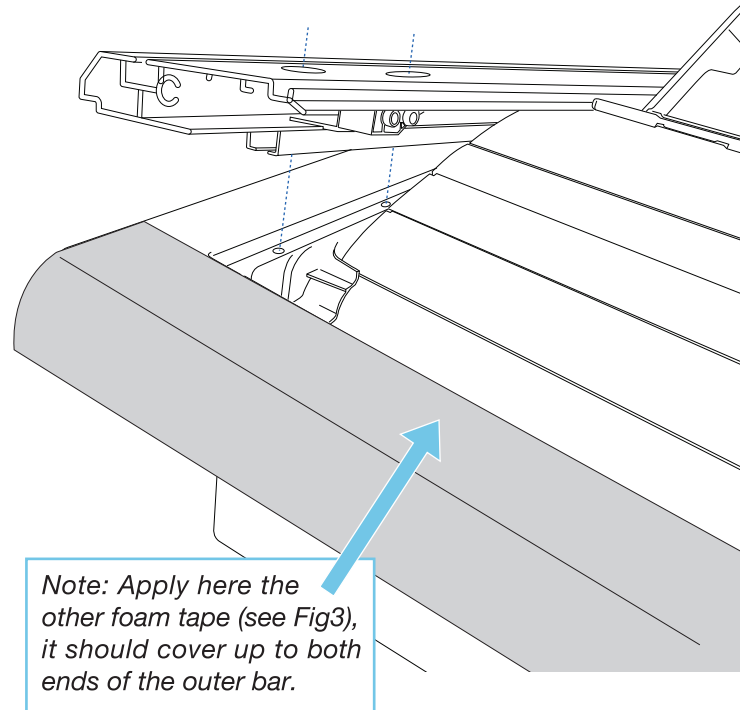
## 1 Apply foam

Apply one foam tape on the bulkhead. Lift the cover and set down on the truck bed, the front of the main cover should sit above the foam that was applied.



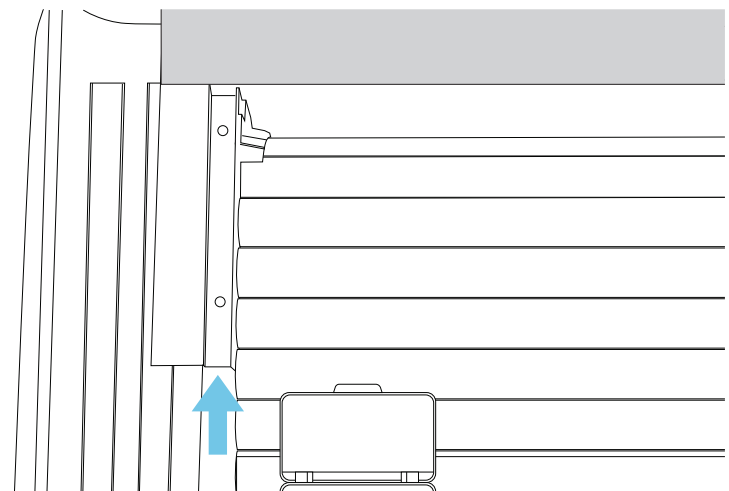
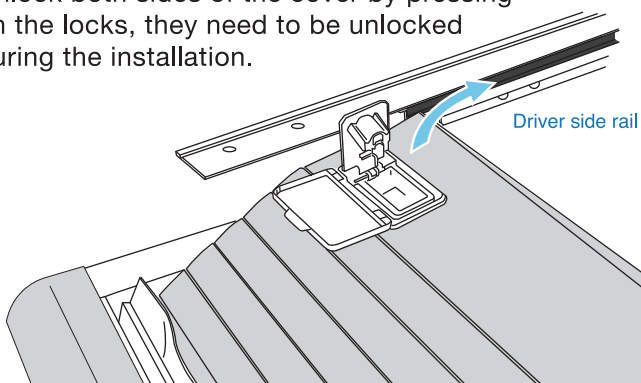
## 3A Install rails

Guide the cover into the rail channel while positioning the rails into the canister spirals. Align the rail tunnel to the groove highlighted in figure below.



## 2 Disengage locks

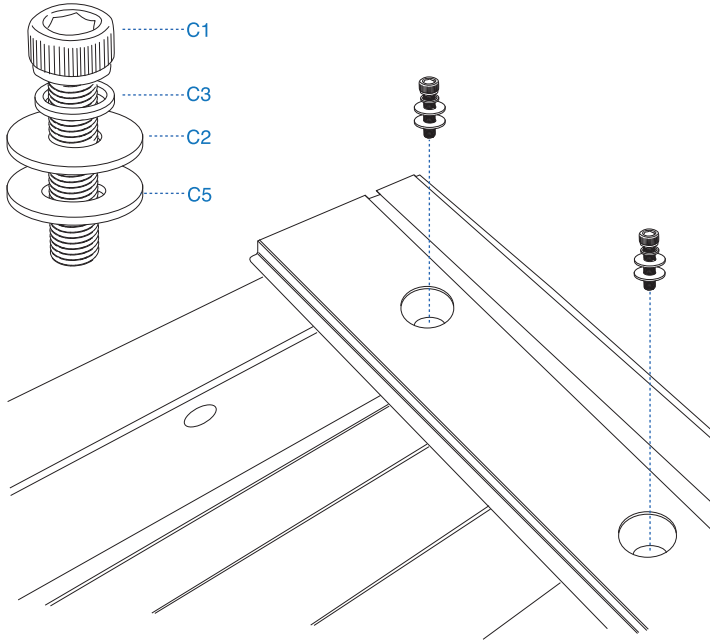
Unlock both sides of the cover by pressing on the locks, they need to be unlocked during the installation.





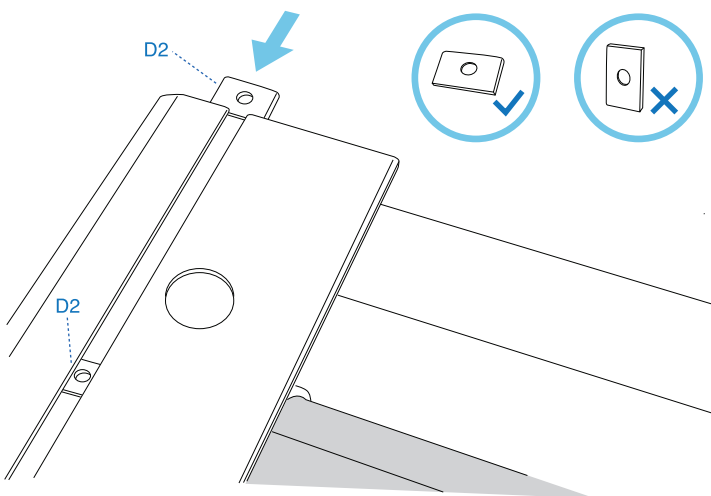
### 3B Install rails

With the rails in place and the cover slid into the rail channel, attach the rails with the four C1 mounting screws.



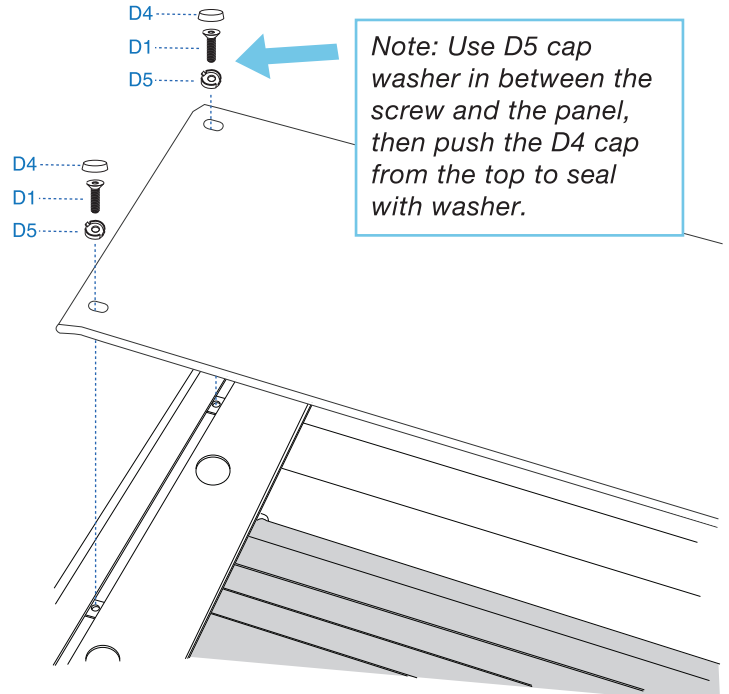
### 4A Install cover panel (Part 1)

First, slide two D2 t-slot nuts into the groove on the rail, make sure the wider side goes in, not the shorter side. If done correctly, the nuts should not move loosely once inserted inside. Do this for the other rail.



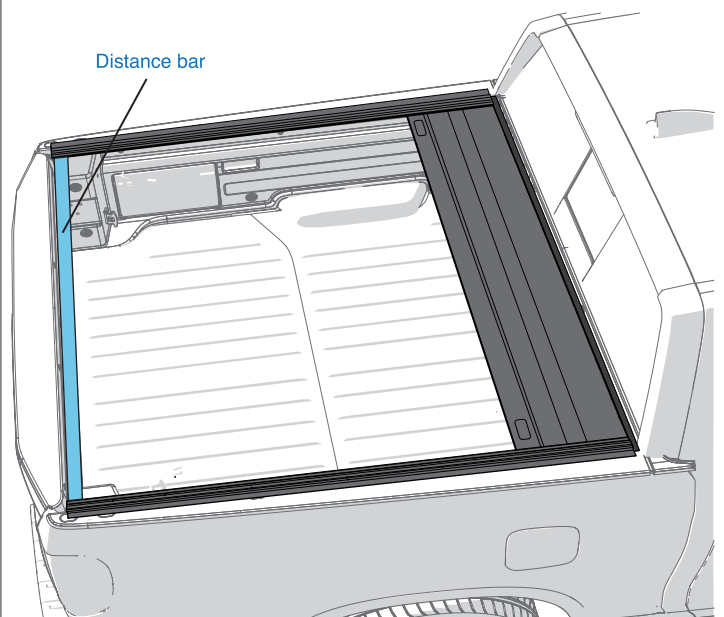
### 4B Install cover panel (Part 2)

Place the panel on top of the cover, then adjust the nuts in the groove to align with holes on the panel. Finally, use wrench on the D1 screws to fix the panel onto the cover assembly.



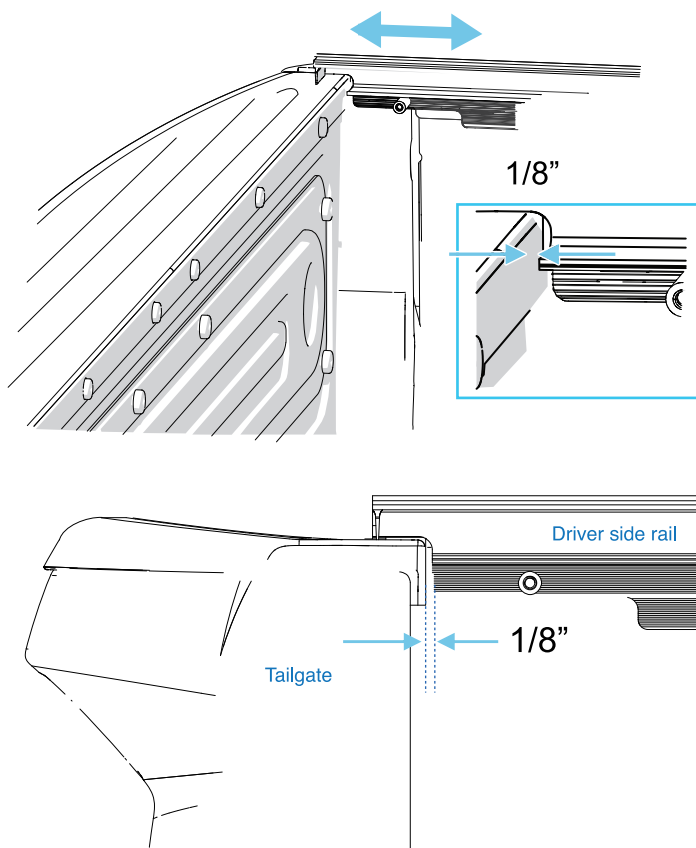
### 5A Adjust position (Part 1)

Install the distance bar to check rail position. Insert the distance bar as below, make sure the distance bar reach the end cab of rail.



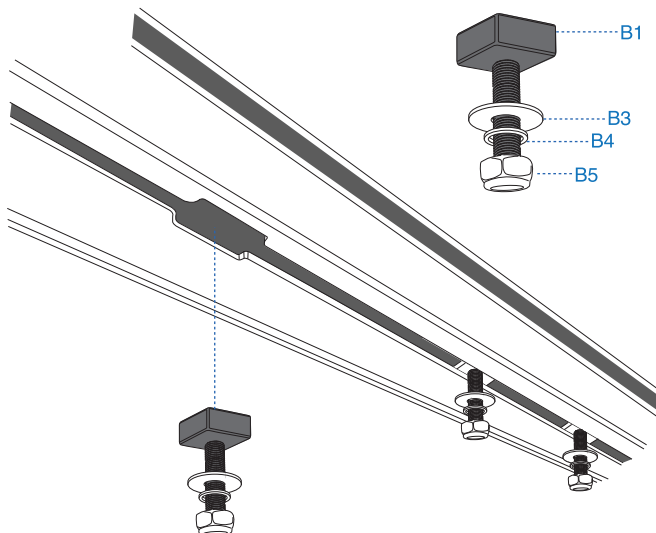
## 5B Adjust position (Part 2)

Pull the cover assembly back towards the tailgate, ensure 1/8" gap in between the tailgate and rails. Make certain the rails do not move after measuring.



## 6 Clamp prep work

Now check under the rail for another groove and look for an opening on the groove. Insert 3 of the assembled bolts into the opening one at a time, and slide them towards the front, middle, and the back of the rail. Do this for the other rail. Clamps will go on these places.

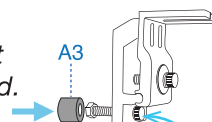


## 7 Install clamps

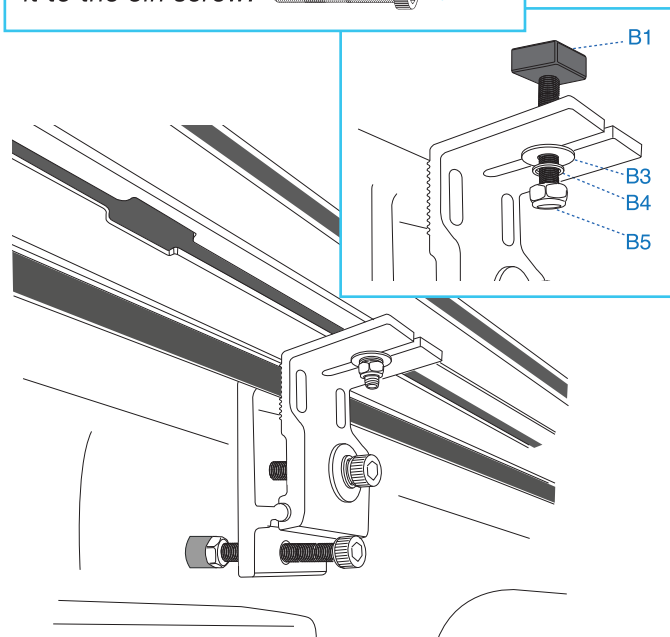
First note the slit on each of the clamps, insert clamps to the bolts. There are 6 clamps, one for each bolt. Make sure the slit sits between the B1 t-slot nut and the B3 washer of the bolt.

*Note: Push clamp against the side of the rail cap while using 10mm wrench to tighten B5 nuts.*

*Note: Add A3 rubber cap to the screw that touches the truck bed.*

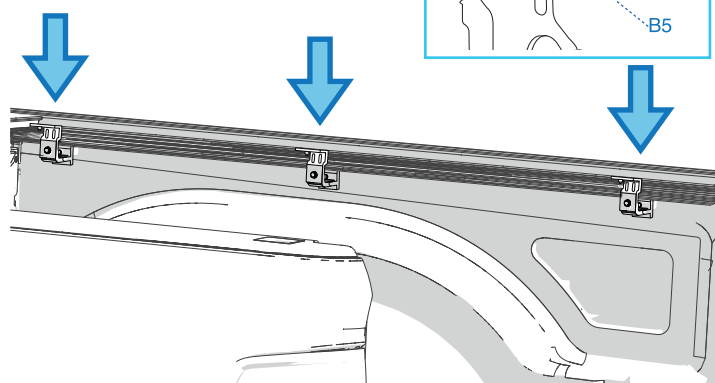
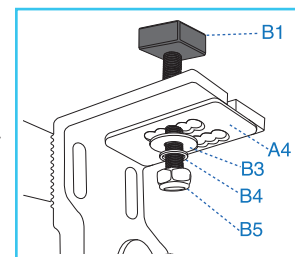


*Note: For Silverado only. If screw is too short, switch it to the 5in screw.*



Make sure the clamps are properly clamped onto the truck bed under the rail and the rails are pushed down before tightening the bolt and the clamp. **\*IMPORTANT\*** Rails must be pushed down while tightening the clamps to ensure the complete seal at the tailgate.

*Note: The A4 plate must touch the clamp surface entirely, this ONLY applies to the TWO clamps closest to the tailgate, one on each rail.*



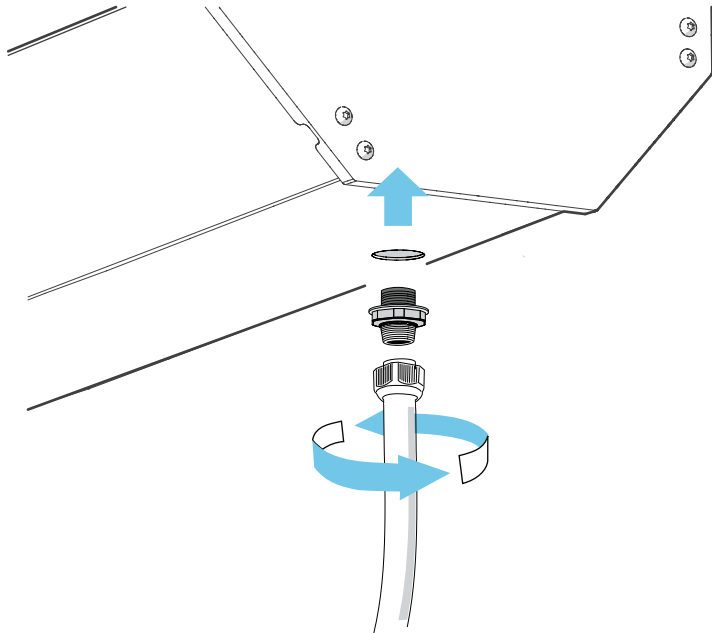


## 8 Install drainage tubes

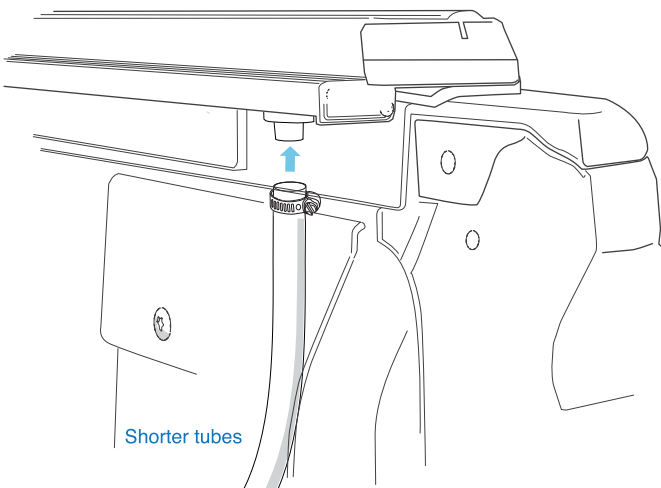
Lock two tubes under the canister using the black connectors. Hook the other two tubes onto the end of the rails, tightened. Insert the rest of the tubes to the holes on the truck bed.

*Note: Not all trucks have predrilled holes, you may need to drill small holes just big enough to plug tubes in that leads out from the bed.*

### Drain tube for canister



### Drain tube for rail

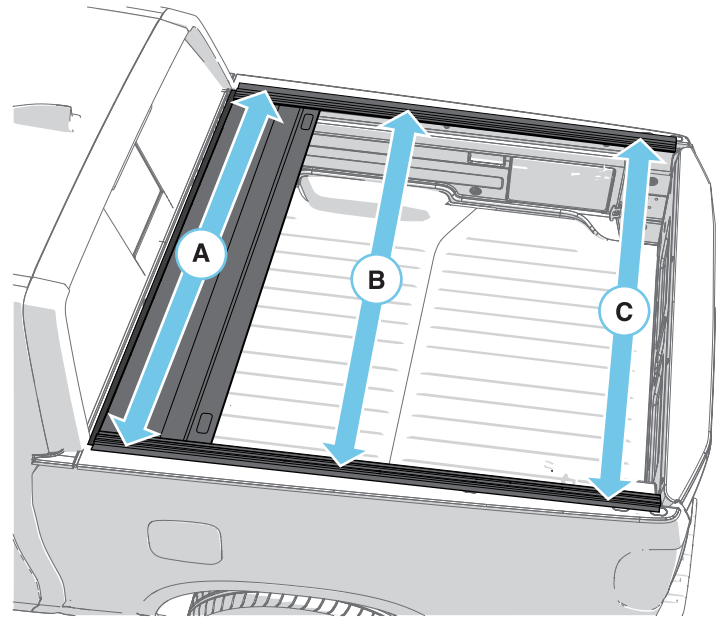


## 9 Final Check

Make sure A, B, and C are equidistant. Measure the distance between the rails at these three locations. Make sure the distance stays the same ( $\pm 1/16$ " as at point A) and parallel.

*Note: Rails distance adjustment shown on STEP 5A*

*Note: Remove distance bar*



## For safety purpose

- Never stand, sit or ride on the cover.
- Do not allow people or animals to occupy bed with the cover closed.
- Keep cover closed when going through auto car wash.
- Clean the debris off the cover before opening to prevent cover stuck and clogged up drain in the canister.
- Check clamps are tightened as needed from time to time.
- Do NOT use heavy chemicals but mild soap and water to clean the cover.
- Check and make sure tubes are clean and without obstruction inside from time to time.



*2 keys shareable*



*Find the keys here*

## Warranty information

We take responsibility over our product, please contact us for any kind of concern or inquiry regarding your purchase. There is a **one-year warranty** on this tonneau cover. To contact our service team, find us at **<https://jcwinauto.com>** or send an email to **[jcwinauto@gmail.com](mailto:jcwinauto@gmail.com)**, we normally respond within 24 hours during business hours, closed on weekend.



