

Manual Retractable Flat Tonneau Cover Installation Guide

For F150

5.5FT TRUCK BED



▶ Watch Full Video Here
<https://bit.ly/3Y0F9Bf>



✉ jcwinauto@gmail.com
ebay@syneticusa.com

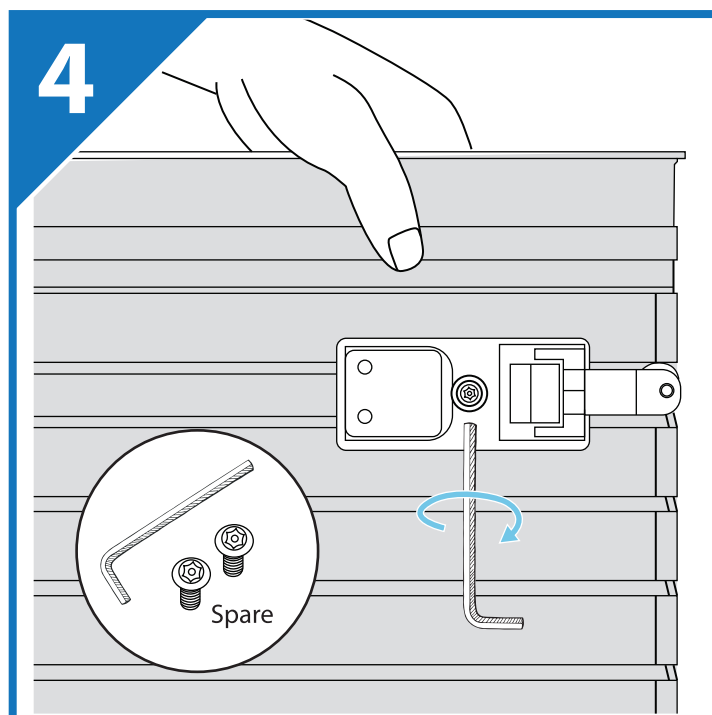
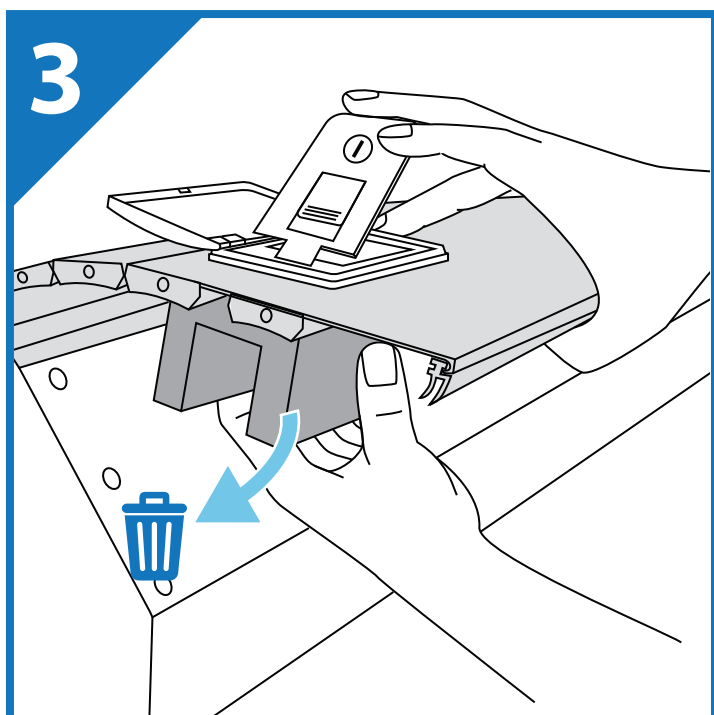
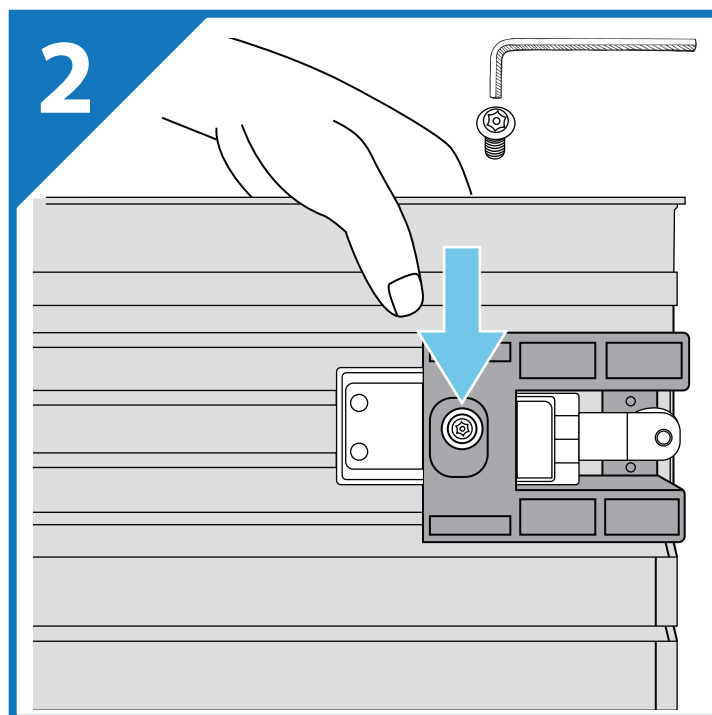
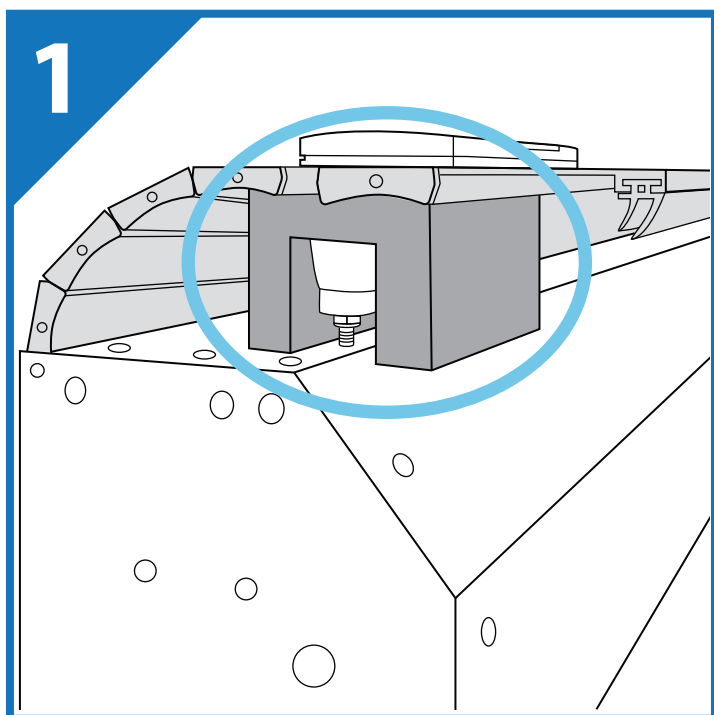
🌐 <https://jcwinauto.com/>
<http://syneticusa.com/>

f facebook.com/jcwinauto
facebook.com/SyneticUSA

Remove Lock Protector Guideline

ATTENTION

The locks are protected by an extra layer of plastic block, to avoid any damage, it is removable after loosening that one screw. **Please remember to put the screw back in afterwards.**



“



We highly recommend watching the video prior to starting the installation. Please

scan this QR code

to see our full installation video of this product first!

”

Components

Main cover x1

Rails x2

Cover panel x1

Foam tape x2

Tube (Small) x2

Tube (Large) x2

Tube connector (Small) x2

Tube connector (Large) x2

Distance Bar x1

A clamp x6

B1 T-slot screws x6

B3 washer(L) x6

B4 washer(S) x6

B5 10mm hex nut x6

C1 screw x4

C2 washer(L) x4

C3 washer(S) x4

C4 wrench x1

C5 plastic washer x4

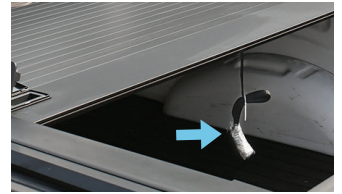
D1 screw x4

D4 wrench x1

E lubricating oil x1

F1 rubber cap x6

F2 wrench x1



Key for lock x2

(Keys are inside the plastic wrap on the strap hanging from the front of cover. 2 keys for 2 locks, shareable)



CAUTION: Over torquing hardware may damage components.



▶ See full installation video here.

Parts Diagram

FIG 1

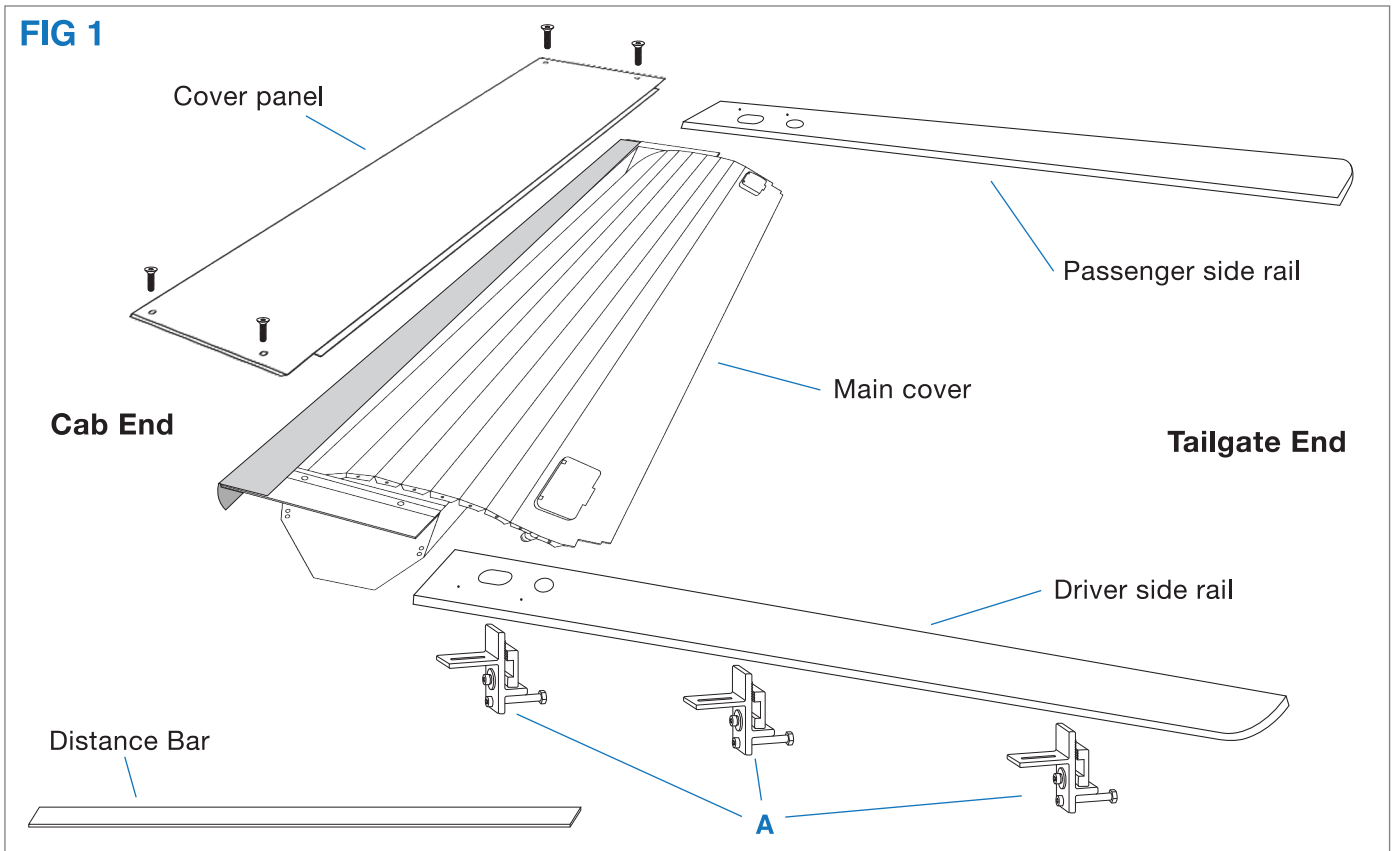


FIG 2

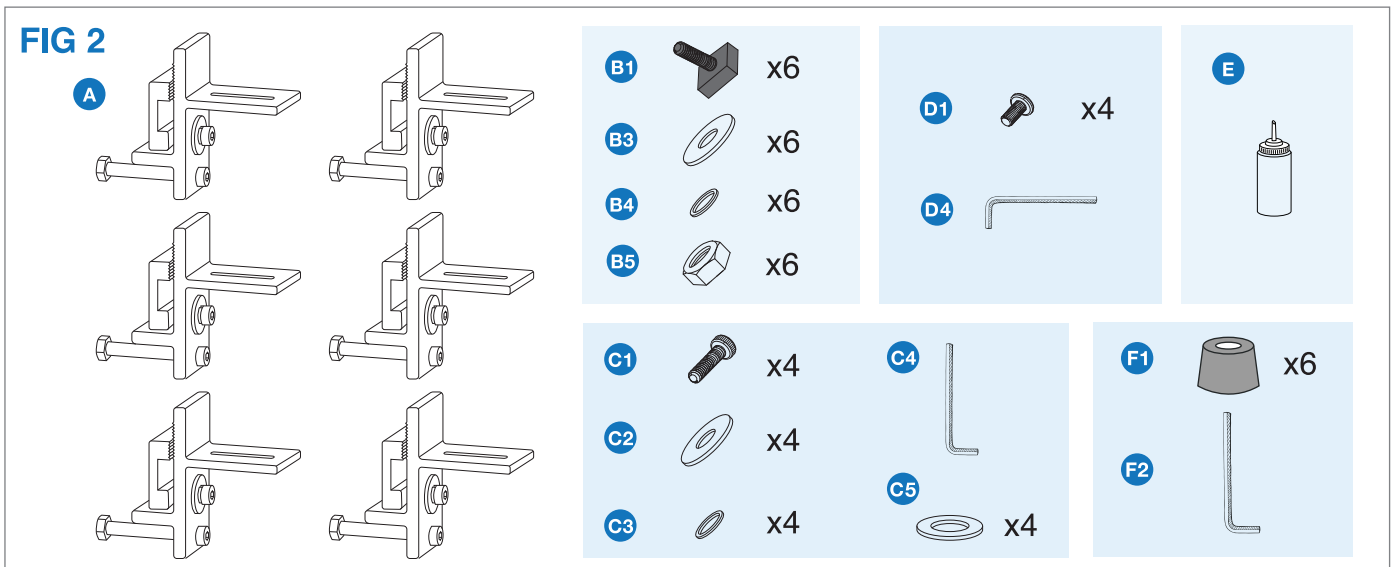
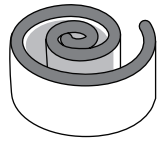
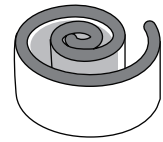
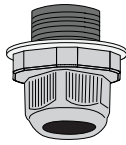
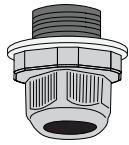


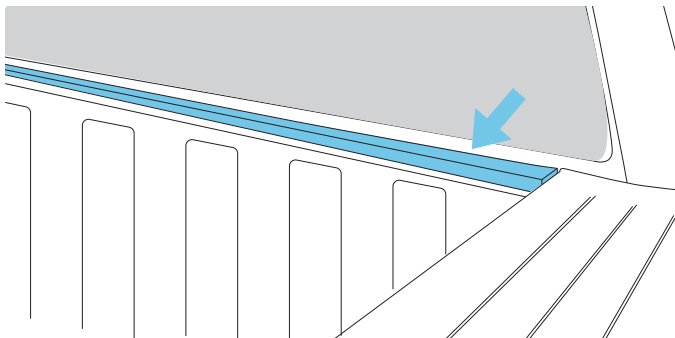
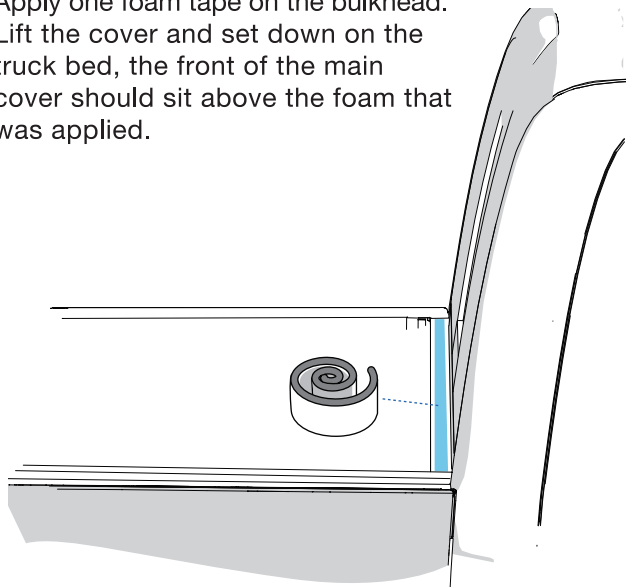
FIG 3

Drain tubes



1 Apply foam

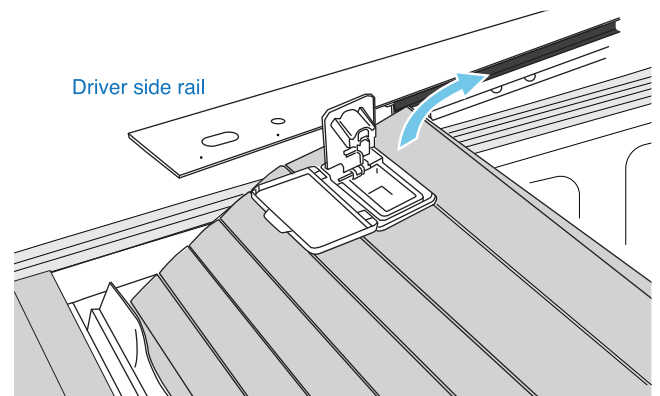
Apply one foam tape on the bulkhead. Lift the cover and set down on the truck bed, the front of the main cover should sit above the foam that was applied.



Note: The other roll is for replacement use

2 Disengage locks

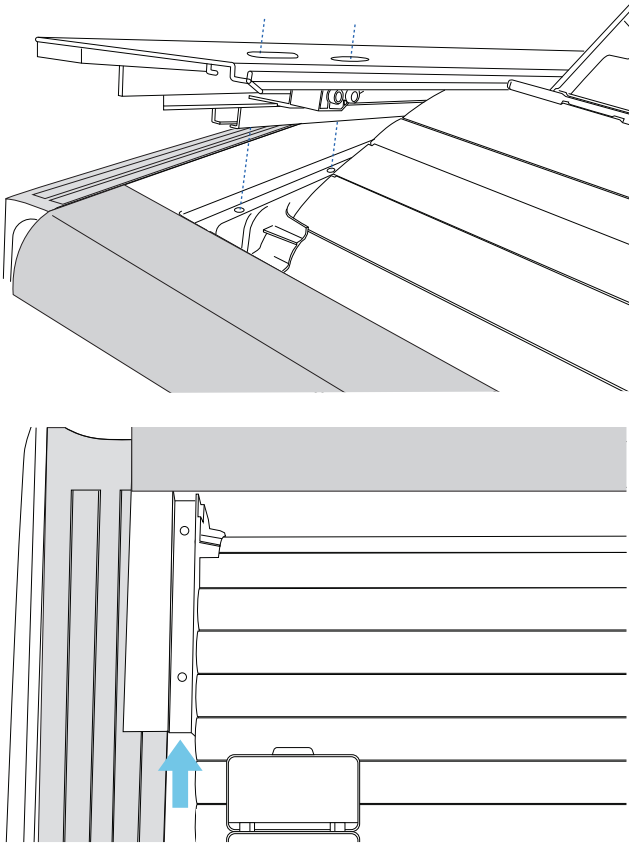
Unlock both sides of the cover by pressing on the locks, they need to be unlocked during the installation.



3A

Install rails

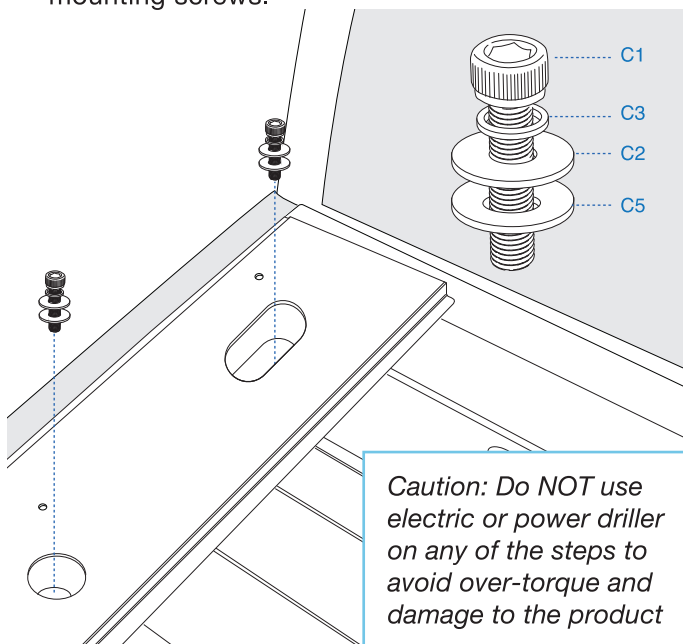
Guide the cover into the rail channel while positioning the rails into the canister spirals. Align the rail tunnel to the groove highlighted in figure below.



3B

Install rails

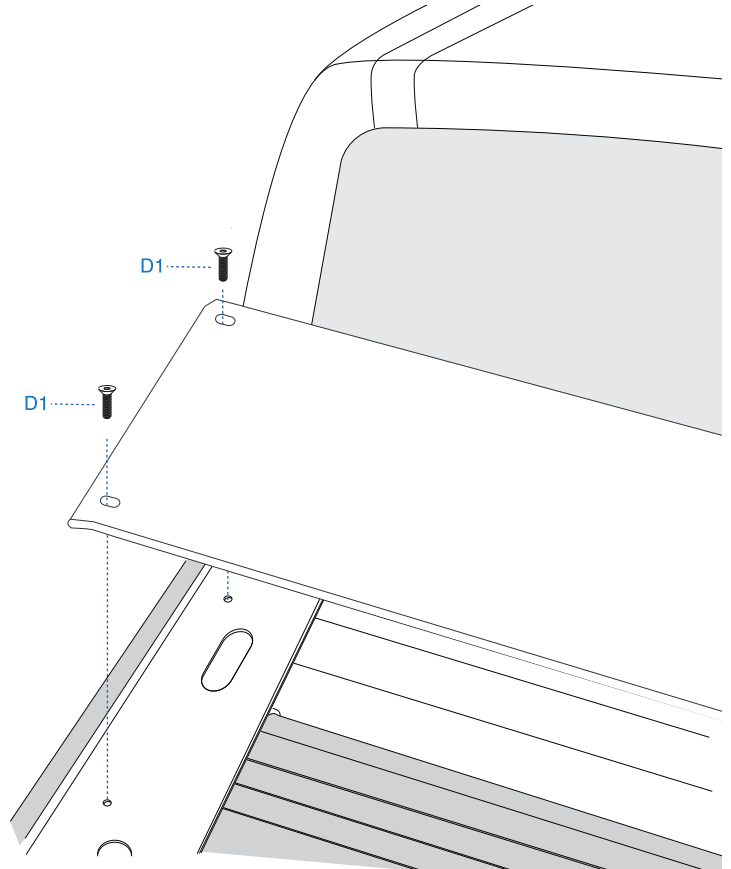
With the rails in place and the cover slid into the rail channel, attach the rails with the four C1 mounting screws.



4

Install cover panel

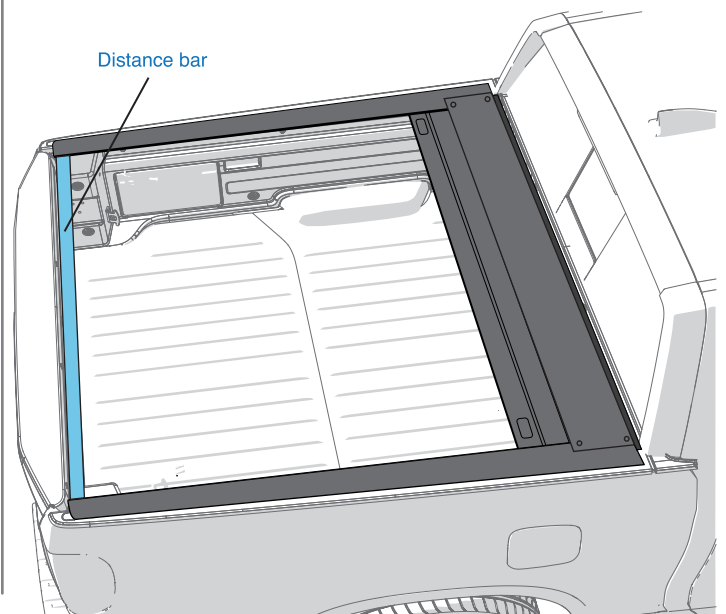
Place the panel on top of the cover, then adjust the nuts in the groove to align with holes on the panel. Finally, use wrench on the D1 screws to fix the panel onto the cover assembly.



5A

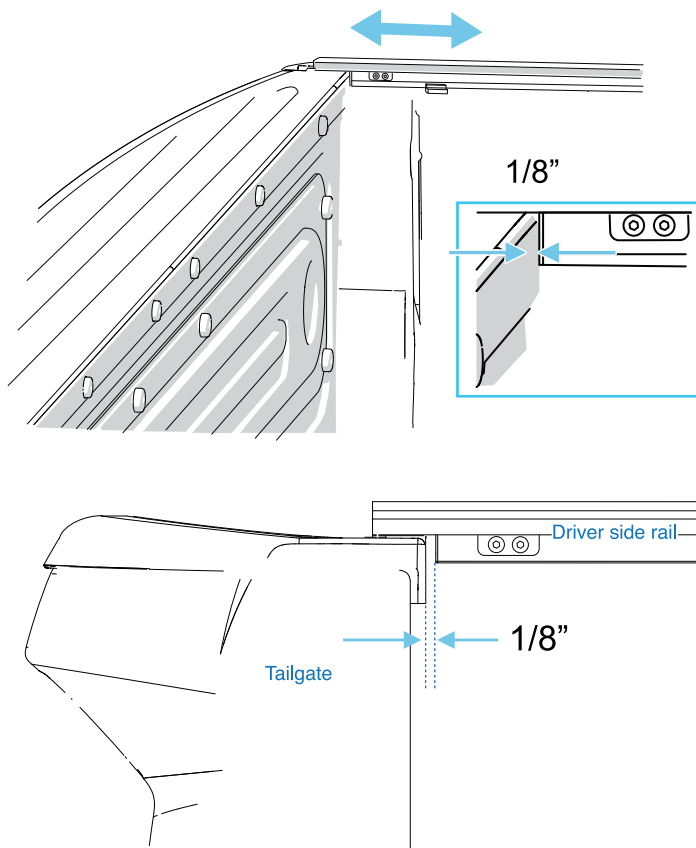
Adjust position (Part 1)

Install the distance bar to check rail position. Insert the distance bar as below, make sure the distance bar reach the end cab of rail.



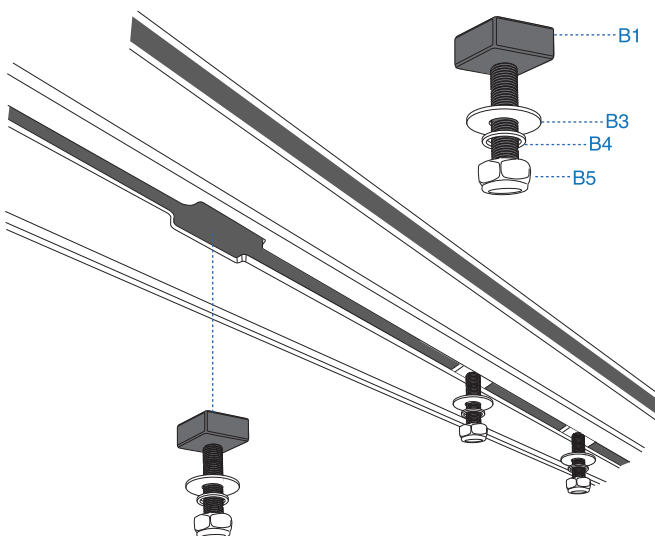
5B Adjust position (Part 2)

Pull the cover assembly back towards the tailgate, ensure 1/8" gap in between the tailgate and rails. Make certain the rails do not move after measuring.



6 Clamp prep work

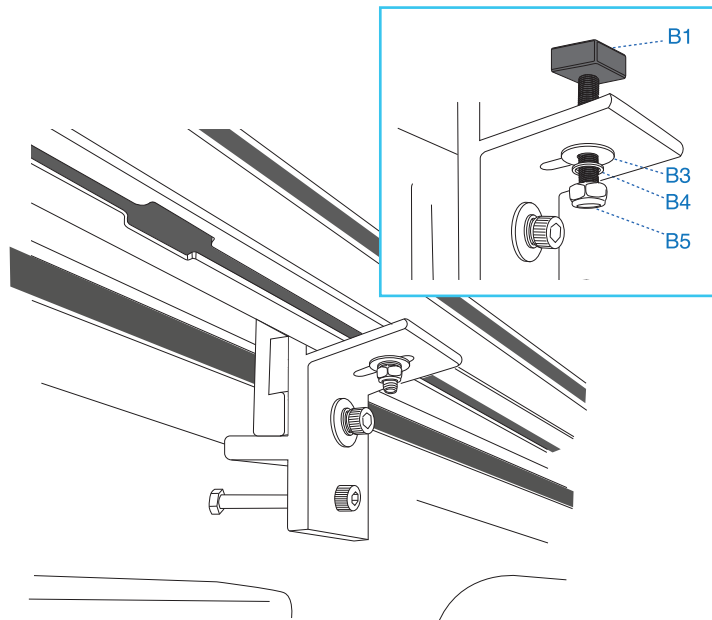
Now check under the rail for the groove and look for openings. Insert 3 of the assembled bolts into the opening one at a time, and slide them towards the front, middle, and the back of the rail. Do this for the other rail. Clamps will go on these places.



7 Install clamps

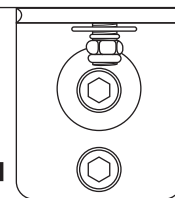
First note the slit on each of the clamps, insert clamps to the bolts. There are 6 clamps, one for each bolt. Make sure the slit sits between the B1 t-slot nut and the B3 washer of the bolt.

Note: Push clamp against the side of the rail cap while using 10mm wrench to tighten B5 nuts.



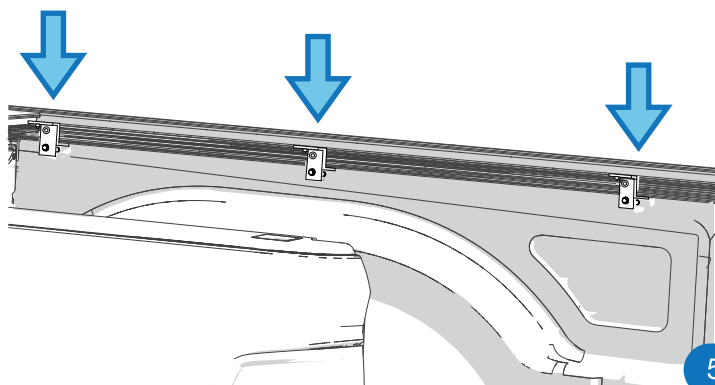
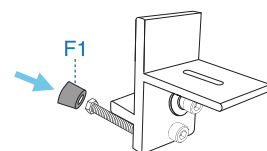
Tighten this 1st

Tighten this 2nd



Make sure the clamps are properly clamped onto the truck bed under the rail and the rails are pushed down before tightening the bolt and the clamp. ***IMPORTANT*** Rails must be pushed down while tightening the clamps to ensure the complete seal at the tailgate.

Optional: Add F1 rubber cap to the screw that touches the truck bed.

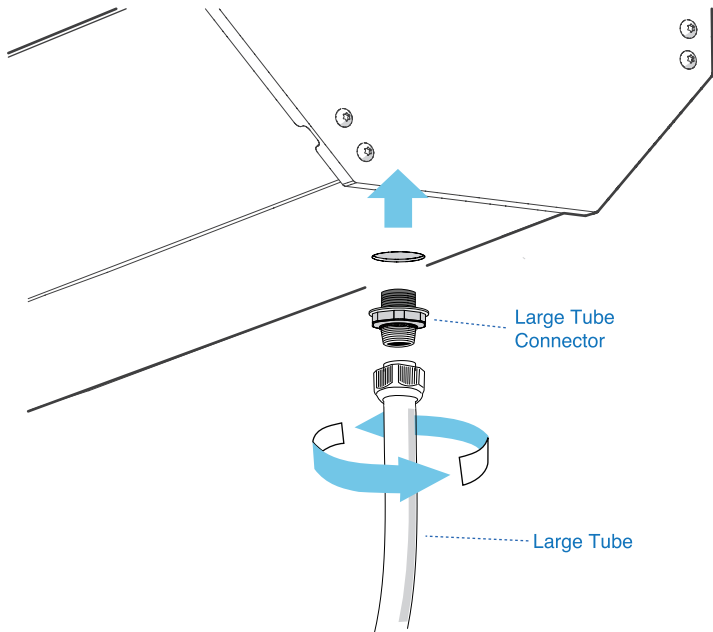


8 Install drainage tubes

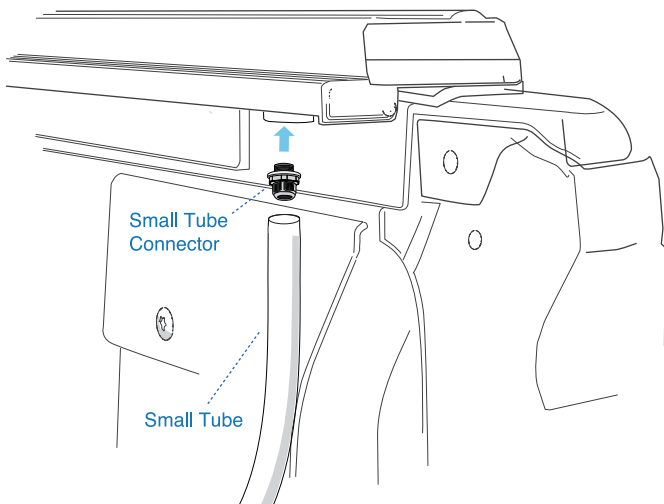
Lock two tubes under the canister using the black connectors. Hook the other two tubes onto the end of the rails, tightened. Insert the rest of the tubes to the holes on the truck bed.

Note: Not all trucks have predrilled holes, you may need to drill small holes just big enough to plug tubes in that leads out from the bed.

Drain tube for canister



Drain tube for rail

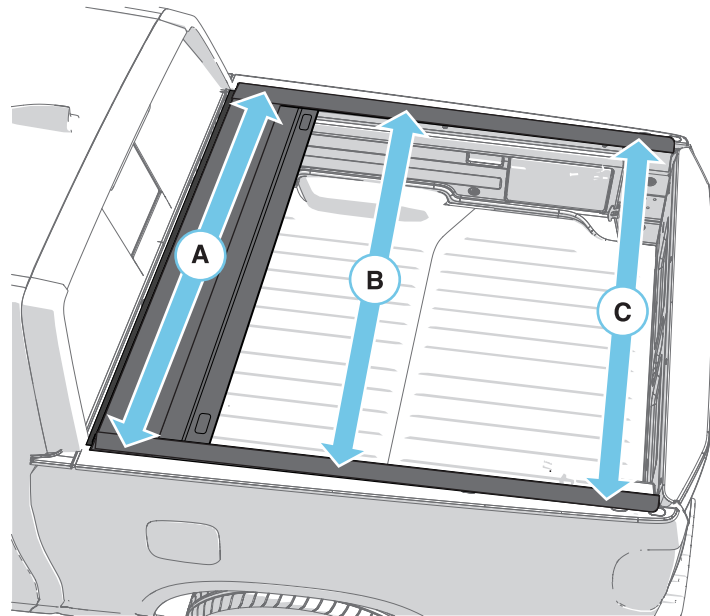


9 Final Check

Make sure A, B, and C are equidistant. Measure the distance between the rails at these three locations. Make sure the distance stays the same ($\pm 1/16$ " as at point A) and parallel.

Note: Rails distance adjustment shown on STEP 5A

Note: Remove distance bar



For safety purpose

- Never stand, sit or ride on the cover.
- Do not allow people or animals to occupy bed with the cover closed.
- Keep cover closed when going through auto car wash.
- Clean the debris off the cover before opening to prevent cover stuck and clogged up drain in the canister.
- Check clamps are tightened as needed from time to time.
- Do NOT use heavy chemicals but mild soap and water to clean the cover.
- Check and make sure tubes are clean and without obstruction inside from time to time.



2 keys shareable




Find the keys here


Warranty information

We take responsibility over our product, please contact us for any kind of concern or inquiry regarding your purchase. There is a **one-year warranty** on this tonneau cover. To contact our service team, find us at <https://jcwinauto.com> or send an email to jcwinauto@gmail.com, we normally respond within 24 hours during business hours, closed on weekend.



626-360-5034
626-788-7436

 jcwinauto@gmail.com
ebay@syneticusa.com

 <https://jcwinauto.com/>
<http://syneticusa.com/>