



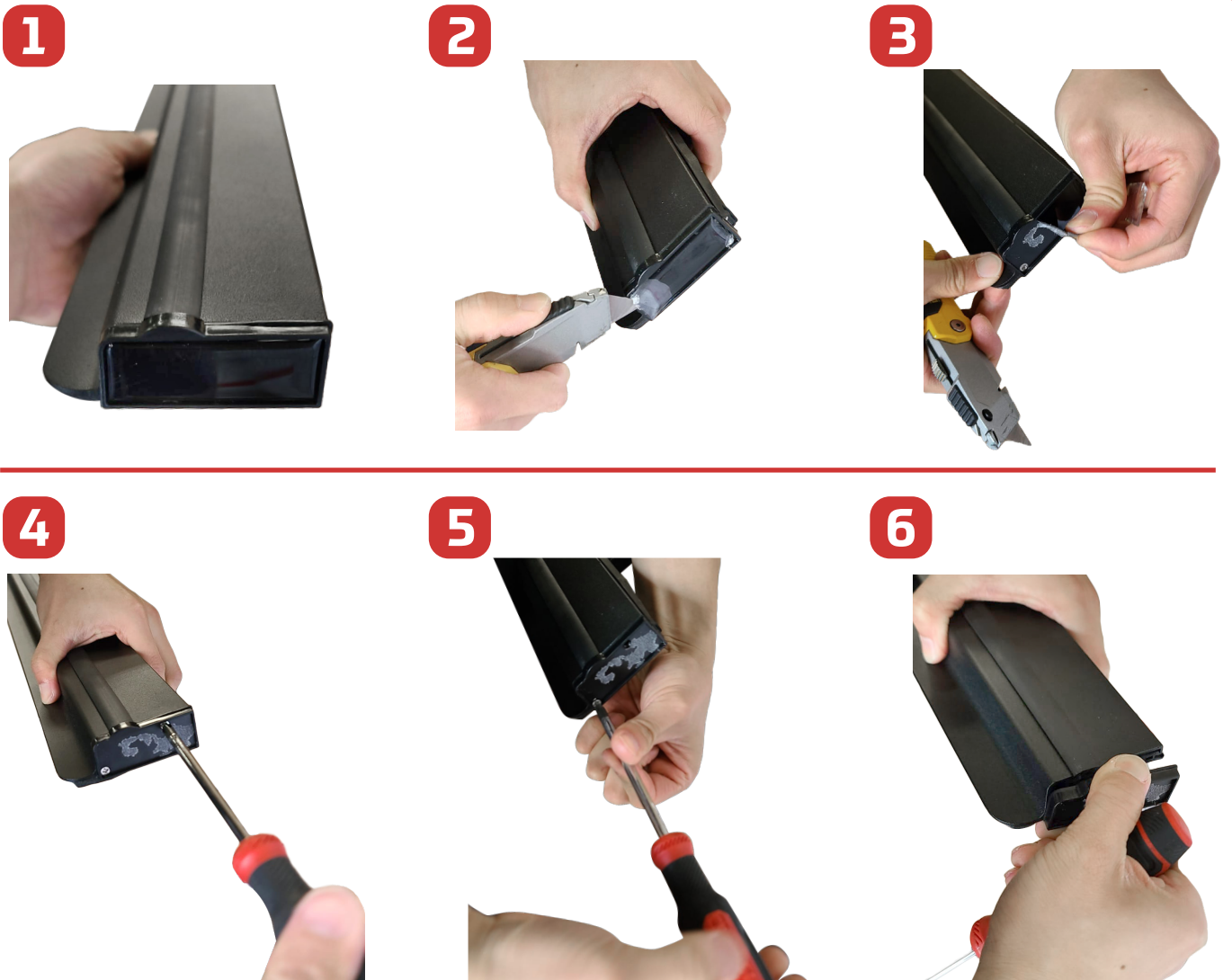
# Crossbar Installation Guide

Please read all installation guide before using this product.

## COMPONENTS



## Modification on the rail endcap



7



8

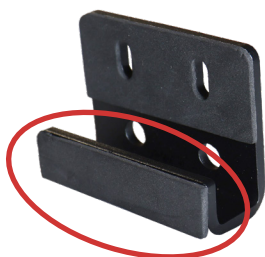


9



## Lock the metal box to the rails (Packs B and C)

10



Remove the foam from the bottom of the metal plate.

11



Match the plate to the base of metal box.

12



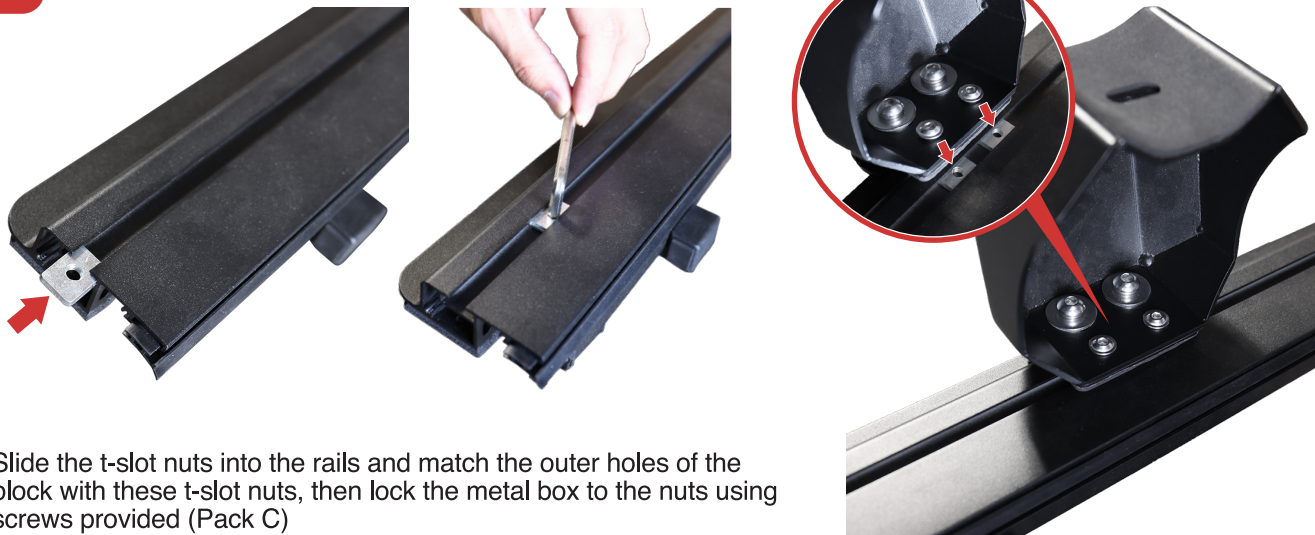
Lock both with screw + ring + washer first from inside of the block, then a nut from the bottom of the block (Pack B)

**Note1:** Screws here are for the 2 inner holes of the metal box

**Note2:** Push the block as much forward as possible, for the correct position of the block and plate to the rail.



13



Slide the t-slot nuts into the rails and match the outer holes of the block with these t-slot nuts, then lock the metal box to the nuts using screws provided (Pack C)

## Lock the metal box to the top bar using washer and screw (Pack A)

14



Slide 2 nuts horizontally into the groove of the bar, direction of the bar does not matter. Do this for the other bar.

**Note:** Remove the foam on the nut if there is difficulty inserting the nut into the groove

15



Lock two boxes to each bar with the screw and washer combo using L-wrench.

**Note:** Bar can slide freely to adjust position before you fully tighten the screw

16



Put on end caps to the bars, then tighten in the 2 screws to the sides of each cap.



Complete!